

## SumiLarv® MOSQUITO GROWTH REGULATOR

SumiLarv® 0.5G is an insect growth regulator that prevents emergence of adult mosquitoes by disrupting development at the pupal stage. This sand granule formulation allows for flexible dosing applications, and the granules stay where they are placed, remaining effective through rain and temperature changes.

- Up to 150-day residual activity in catch basins
- Controlled release insect growth regulator that breaks the mosquito life cycle
- Non-flushing active adheres to concrete and organic debris
- Remains effective in areas that dry and rewet



### PRODUCT SPECIFICATIONS

<b>Key Target Pest(s)</b>	Mosquitoes, including <i>Aedes</i> , <i>Anopheles</i> , and <i>Culex</i> spp.
<b>Signal Word</b>	Caution
<b>Form</b>	Granular
<b>Active Ingredient(s)</b>	Pyriproxyfen
<b>Class of Chemistry</b>	Juvenile hormone receptor modulator (7C)
<b>Activity</b>	IGR, residual
<b>Mode of Action</b>	Disrupt and prevent metamorphosis
<b>Stability</b>	Not applicable – sand granule
<b>Flammability</b>	Not listed as flammable or combustible
<b>Odor</b>	Slight
<b>PPE Requirements</b>	None listed
<b>Maximum Yearly Application Rate</b>	20lb SumiLarv 0.5G/Acre/Year
<b>Mix or Dilute In</b>	Ready to use
<b>Shelf Life</b>	3 years

### Packaging

- 1 kg unit (10 per case)
- 5 kg unit (2 per case)

### Use Sites

#### Catch basins

#### Temporary/Permanent Water Holding Sites

- Ornamental ponds
- Landfills
- Waste water impoundments
- Salvage yards
- Manmade depressions

#### Natural/Artificial Water Holding Containers

- Tires
- Potted plants
- Hollow trees and tree holes
- Bird baths
- Flooded roof tops

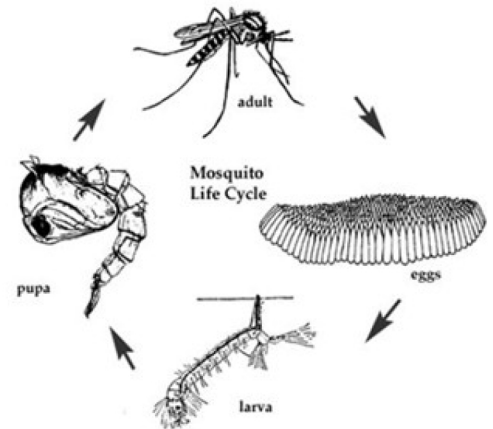
#### Livestock Areas

- Animal waste lagoons
- Livestock runoff lagoons



## Sumilarv 0.5G Tips and Tricks

- Calculate the size and water volume of treatment area prior to application.
- The active ingredient in Sumilarv 0.5G affects different life stages. Eggs exposed to pyriproxyfen are less likely to hatch and immature mosquitoes will not develop past the pupal stage. The presence of actively swimming larvae after Sumilarv 0.5G application is normal.
- When applying to manure lagoons, ornamental ponds and similar sites, apply Sumilarv 0.5G along the edges where mosquitoes are more likely to congregate.
- For best results, use Sumilarv 0.5G as part of an integrated pest management program to control the targeted pest and the diseases they vector.



## Application Rates

Water Holding Sites/Containers		
Volume of Water (Gallons)	Water Depth (ft) Less Than or Equal To	Amount of Sumilarv 0.5G (Grams)
0-500	1	25
500-1500	2	50
1500-3000	4	75
3000-4500	6	100
4500-6000	8	125
Catch Basins		
Amount of Sumilarv 0.5G (Grams)		
25-75		

**Always read and follow all label instructions.**